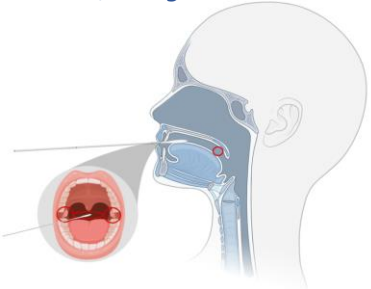
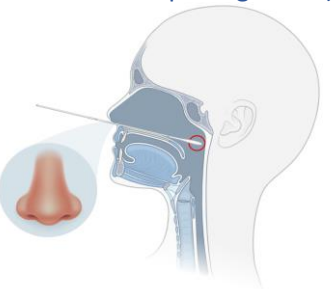
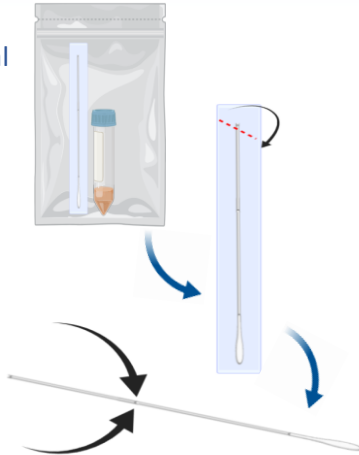


Nasopharyngeal (NP) or Oropharyngeal (OP) Specimen Collection for COVID-19 Testing

Qualitative Real-Time RT-PCR test for detection of RNA, SARS-CoV-2

This test is only available under Emergency Use Authorization only.

- 1** Open single-use kit containing swab(s) and Viral Transport Medium (VTM) tube.
 - 2** Peel open collection swab packaging and keep sterile.
 - 3** Pinch and hold swab at the score line.
 - 4a** Gently insert small (NP) swab into patient's nostril following the septum floor of the nose and extending into the posterior nasopharynx (distance from nostrils to outer opening of ear).
 - 4b** Gently insert large (OP) swab into patient's throat (posterior pharynx and tonsillar areas) and swab over both tonsillar pillars and posterior oropharynx. *Note: Avoid the tongue, teeth, and gums.*
- Or**
- 5** Leave swab for several seconds to absorb secretions
 - 6** Rotate swab several times along and slowly remove swab



- 7** Remove cap from VTM tube with sterile technique
- 8** Insert swab into VTM tube.
- 9** Break the swab at the scoreline and discard top portion of swab.
- 10** Replace cap on the tube and screw on tightly to avoid leaks.
- 11** Label specimen with patient ID, DOB, collection date and time, collector initial and place in specimen bag (with biohazard label).
- 12** A Test Requisition form must be signed by the ordering physician and placed in the outer sleeve of the specimen bag
- 13** Refrigerate sample (at 2 °C–8 °C) and send to lab immediately (within 72 hours)

